



GAT MONTHLY MEMBERSHIP PROGRESS REPORT

Results as of: 2/28/2022

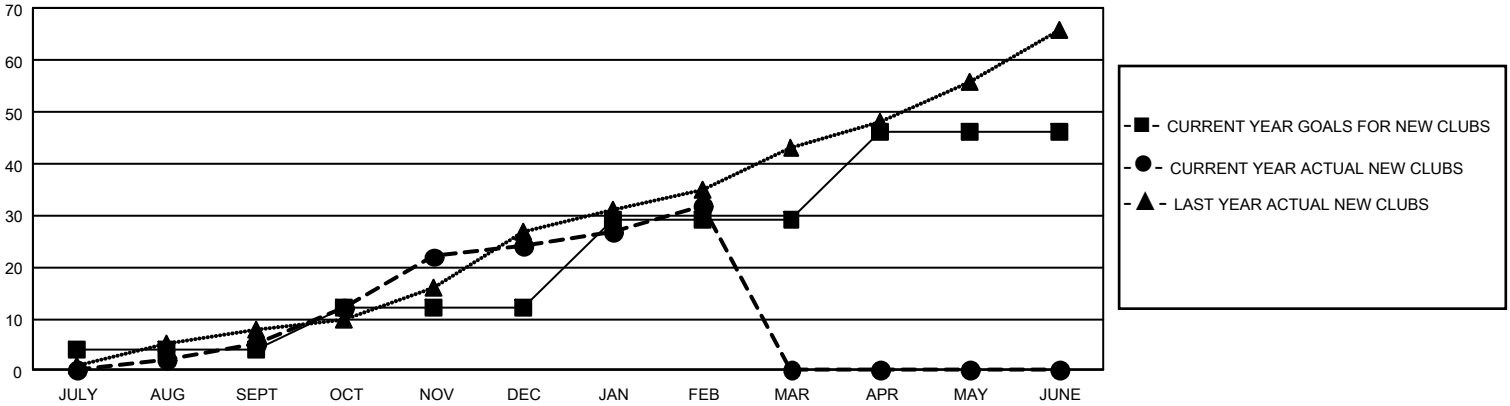
GAT Constitutional Area 7

REPORT DOES NOT INCLUDE CLUBS IN UNDISTRICTED AREAS.

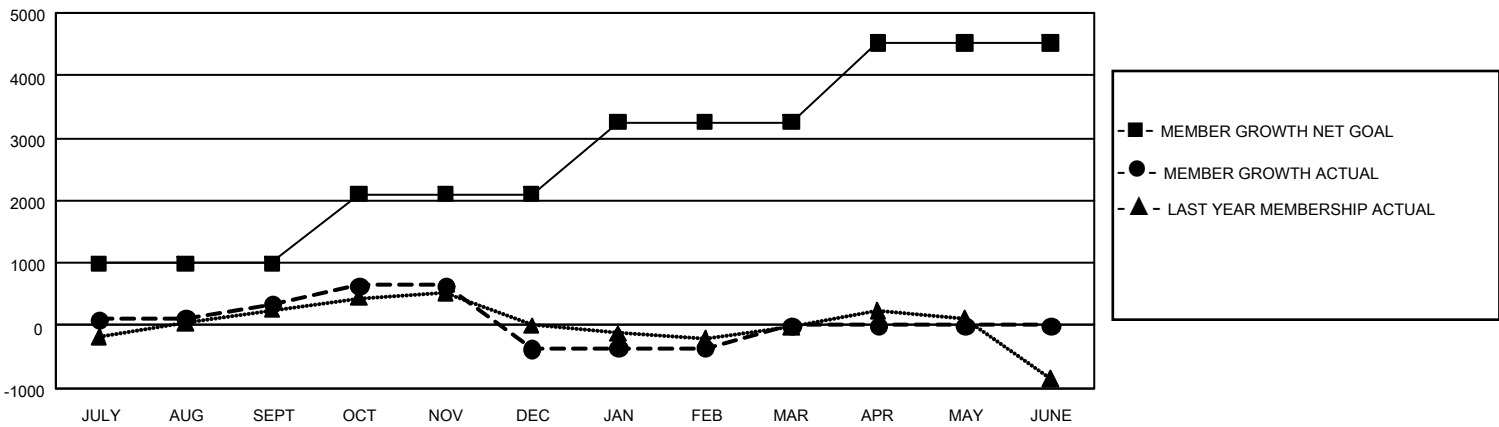
Clubs			
RESULTS FOR 2021-2022			
QUARTER	NEW CLUB GOAL	NEW CLUBS	DROPPED CLUBS
JULY/AUG/SEPT	12	5	30
OCT/NOV/DEC	24	19	9
JAN/FEB/MAR	51	8	15
APR/MAY/JUNE	51	0	0

Members			
RESULTS FOR 2021-2022			
QUARTER	MEMBER GROWTH NET GOAL	MEMBER GROWTH ACTUAL	DROPPED MEMBERS ACTUAL (including transfers)
JULY/AUG/SEPT	996	1,502	1,003
OCT/NOV/DEC	1105	1,576	2,165
JAN/FEB/MAR	1149	745	641
APR/MAY/JUNE	1270	0	0

GOALS AND ACTUAL NEW CLUBS CUMULATIVE



GOALS AND ACTUAL MEMBERS CUMULATIVE



DROPPED CLUBS: 54	935 CLUBS OF 1,894 ADDED 1 OR MORE NEW MEMBERS	GENDER DISTRIBUTION	
		MALE 25,176 (59.17%) FEMALE 17,372 (40.83%) NON BINARY 2 (0.00%) PREFER NOT TO ANSWER 0 (0.00%)	
DROPPED MEMBERS		CLICK HERE FOR CUMULATIVE MEMBERSHIP DATA	
DECEASED 335 CLUB CANCELLED 157 OTHER 3,317 TOTAL 3,809	TOTAL FAMILY UNIT MEMBERS 7,251 FAMILY MEMBERS PAYING HALF DUES 3,887		